



# Behavioral Health Support ECHO

In May 2022, tragedy struck in Uvalde, highlighting the community's urgent need for behavioral health support. To address this, a **Behavioral Health Support ECHO** is being launched to provide education and ongoing support for integrating pediatric and adult behavioral health services (inclusive of mental health) into primary care. This ECHO is for anyone who works at the primary care interface, including front office staff, providers, counselors, pharmacists, and emergency medical service personnel.

These weekly, hour-long sessions will include brief educational presentations and community-based conversations on critical behavioral health topics.

Weekly sessions are **FREE** and open to all members of the Uvalde care community

**FREE continuing education credits will be provided**

Session details available at:

<https://tinyurl.com/UNTHSC-Behavioral-Health-ECHO>

## What is ECHO?

Extension for Community Healthcare Outcomes (ECHO) uses videoconferencing to connect health care workers and community members to a multi-disciplinary team with relevant knowledge to build capacity for delivering best-practice care.

## Why join?

- Knowledge acquisition
- Engagement with a dynamic community of practice and learning
- Facilitation of behavioral health availability
- Behavioral health capacity building



# Meet Our Core Team



**Waridibo Allison, MD, PhD**  
Vice President of Health Policy  
Director, Center for Health Policy  
Director, Rural Telementoring Training Center  
The University of North Texas  
Health Science Center at Fort Worth



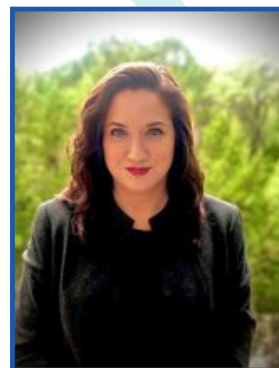
**Brenda Hoffman, MA, LPC, CHW-I**  
Behavior Health Counselor  
Director, Southwest Border  
Area Health Education Center (AHEC)



**Charles Mathias, PhD**  
Psychologist  
Associate Professor  
UT Health San Antonio



**Stacy Ogbeide, PsyD, ABPP, CSOWM**  
Clinical Health Psychologist  
Associate Professor  
Director of Behavioral Health Education  
UT Health San Antonio



**Mari Robinson, JD**  
Director, UT System Virtual Health Network  
Director, Medical Technology Resource &  
Education Center (MTREC)  
UT Medical Branch Galveston



**Barbara Robles-Ramamurthy, MD**  
Adult, Child, Adolescent & Forensic Psychiatrist  
Assistant Professor  
UT Health San Antonio



**April Wiechmann, PhD**  
Clinical Neuropsychologist  
Clinical Medical Director, Geri-Psych  
Medical Director for Integrated Behavioral Health  
The University of North Texas  
Health Science Center at Fort Worth



[info.CHP@unthsc.edu](mailto:info.CHP@unthsc.edu)