

hsc

School of
Public Health



community
corps

Centering community in all we do



- We educate the current and future workforce
- We seek solutions to support healthier communities
- We honor the wisdom that comes from lived experience,
practice expertise, AND research evidence



What is the Community Corps?

A registry of individual people and organizations who:

- Advance public health education
- Innovate public health research and scholarship
- Work for health equity
- Create a positive impact on communities

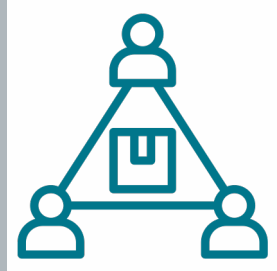


The SPH Community Corps is a group of organizations and people who use their knowledge and experiences to work with the School of Public Health. Together, they aim to improve public health education and research, eliminate unfair differences in health outcomes, and create opportunities for communities to be healthier and to flourish.

The Community Corps was designed by a team of community members and academic partners who established a set of values and principles that guide our work.



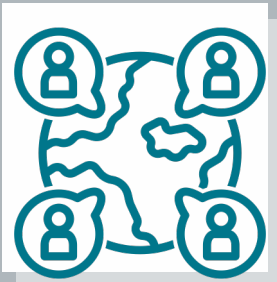
Sustainability



Co-Learning



Excellence and impact



Cultural humility



Collaboration



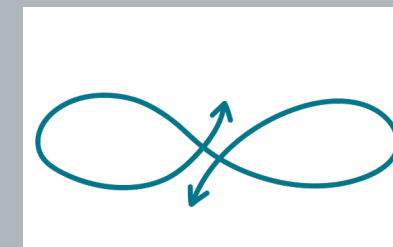
Accountability



Community Centered



Health equity



Transcendence

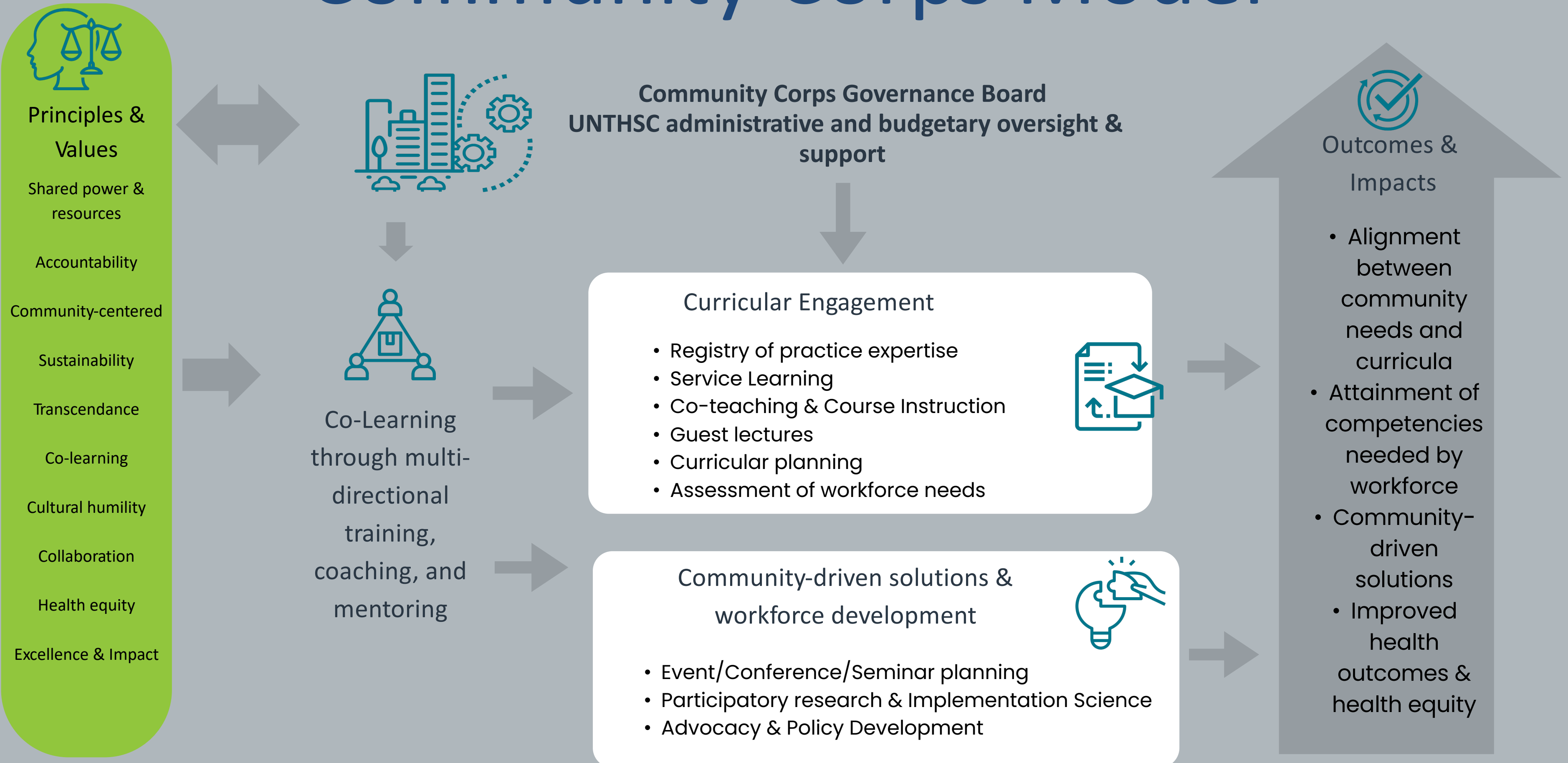


Shared power and resources

Community Corps Member Roles



Community Corps Model



How to become a member of the Community Corps registry:



Follow this QR code to apply:



Wait for a follow-up email and reply with a copy of your resume or related information

You will be notified of the status of your application within 90 days

1

Review your areas of knowledge and experience (see examples on the next page)

2

3

[Or click on this link:](#)

4

5

The Community Corps governance committee will review your application.

6

7

New Community Corps members will complete a brief online orientation



Areas of Knowledge and Expertise



adverse childhood experiences	community health assessment	epidemiological surveillance	housing and homelessness	leadership development	non-profit management and boards	supervision
allied health professions	community health worker	fundraising	immigration	lived experience (culture, geographic region, and related social determinants of health)	policy development, advocacy, and/or evaluation	tailoring evidence-based practices for communities
behavioral health	community outreach, engagement & communication	grant writing	implementing evidence-based practices	marketing and communication	program development	trauma Informed Care
bias and discrimination	criminal justice systems	grassroots organizing and civic engagement	infant mortality	maternal mortality	public health department functions	using organizational data for decision making
budget and resource management	culture	health literacy	infectious disease	mental health	public health practice	vaccination
cancer	disaster/emergency management and preparation	health system payer models	injury and violence prevention	resilience	social media communication	working in government systems
chronic disease	education systems	health systems	internal program evaluation	navigating community systems	social service systems	working with the press
coalitions	environmental health	historical trauma	interprofessional practice	negotiation, mediation, conflict resolution	structural inequities and health equity	

