

VIEW BOOK

Fiscal Year
2021-2022

OUR VALUES

We are One University, united by a passion for innovation and teamwork to transform lives in order to improve the lives of others by creating solutions for a healthier community.



Serve Others First



Collaboration



Integrity



Be Visionary



Respect

CONTENTS

Academic Overview	2
HSC Profile	3
HSC Student Profile	4
Student Residency	5
College/School Student Profiles	6
Student Profile Comparison 2021 to 2020	7
Graduation Rates	8
HSC Team Member Profile	10
Financials	11
University Financial Information	11
HSC Tuition Rates 2021-2022	11
Research	12
Patient Care	13
Community Service	14
Contacts	15

ACADEMIC OVERVIEW



TEXAS COLLEGE OF OSTEOPATHIC MEDICINE (TCOM) Est. 1970

One of the nation's top medical schools for primary care, TCOM has an outstanding reputation for our innovative medical school curriculum, cutting-edge research, quality patient care and outstanding student performance.

SCHOOL OF BIOMEDICAL SCIENCES (SBS) Est. 1993

SBS takes great pride in shaping the future of the biomedical workforce with three areas of focus: Education, Student Services and Research. Our students are the educators, researchers and health care professionals of tomorrow. They also are fully engaged in innovative, groundbreaking research to tackle major health care issues such as cancer, cardiovascular disease and Alzheimer's disease.

SCHOOL OF PUBLIC HEALTH (SPH) Est. 1999

From its inception, the School of Public Health has focused on providing critically needed public health education and research to North Texas. In addition to our exceptional curricula, we require our students to engage in hands-on public health experience beyond the classroom to ensure our graduates are well versed in all aspects of public health.

SCHOOL OF HEALTH PROFESSIONS (SHP) Est. 2004

With three outstanding programs under one roof, our School of Health Professions offers a Doctor of Physical Therapy, Master of Physician Assistant Studies and Master of Science in Lifestyle Health and Coaching degrees. We provide the knowledge, experience and skills necessary to ensure our students excel in their chosen health professions.

COLLEGE OF PHARMACY (COP) Est. 2013

The College of Pharmacy is committed to developing patient-centric pharmacy professionals trained in an interprofessional environment. We advocate a team health care concept coupled with optimizing health through discovery.

HSC PROFILE



RESPECT



SERVE OTHERS FIRST



INTEGRITY

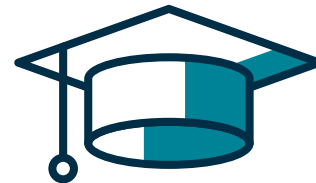


2,472

HEADCOUNT ENROLLMENT*

1,461 Doctoral-Professional Practice
92 Doctoral-Research
925 Master's
29 Graduate Certificates

*35 dual degree students count only once in the total headcount enrollment.



820

DEGREES & CERTIFICATES AWARDED

347 Doctoral-Professional Practice
14 Doctoral-Research
436 Master's
23 Graduate Certificates

6%



INCREASE IN HSC ENROLLMENT FROM 2020**

15%



Increase in the number of Black/African American students awarded HSC degrees and certificates since 2020

41%

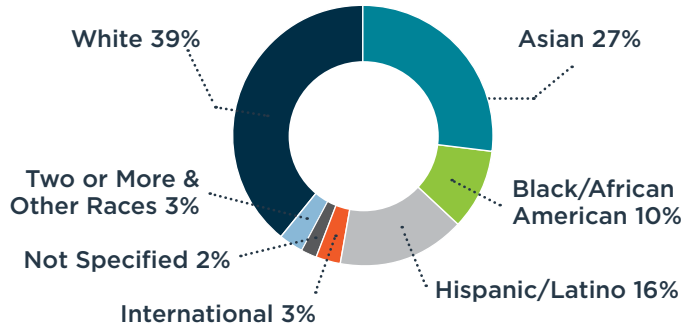
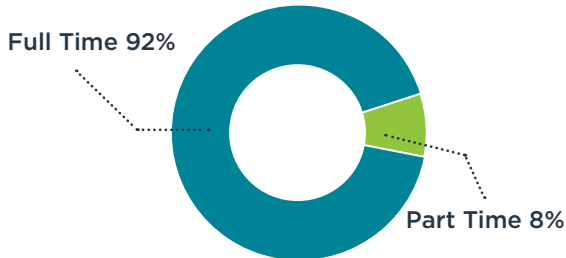
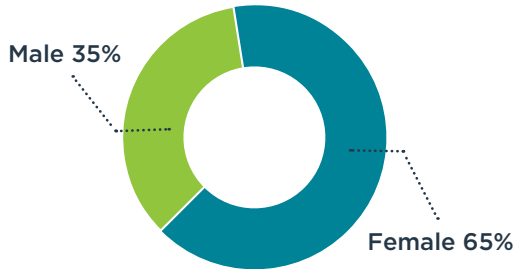


Increase in the number of Hispanic/Latino students awarded HSC degrees and certificates since 2020

**2021 enrollment includes all graduate certificate students, according to IPEDS enrollment definitions, while the 2020 Viewbook enrollment used the THECB criteria that excludes some certificate students. The normalized increase was 5.5%. • Enrollment according to Fall 2021 IPEDS Enrollment Report that includes the THECB CBM001 Fall 2021 Enrollment Report plus students enrolled in self-supporting graduate certificate programs, according to IPEDS definitions. IPEDS is the Integrated Postsecondary Education Data System of the U.S. Department of Education National Center for Education Statistics. • Graduates according to the IPEDS Academic Year 2020-2021 Completions Report, which includes the THECB CBM009 AY2021 Report of degrees awarded, plus completions of self-supporting graduate certificate programs. • Students enrolled in multiple programs count only once in the HSC total enrollment.

HSC STUDENT PROFILE

TOTAL STUDENTS



Age Range 20-73 • Median Age 25

New Students 31%

Total enrollment that are new to HSC (first enrolled) as of Fall 2021.

27% of all HSC students • 32% of new HSC students
Identify with one or more underrepresented race/ethnicity groups

(Black/African American, Hispanic/Latino, American Indian or Alaska Native, and Native Hawaiian or Other Pacific Islander)

34%



Increase in the number of
Black/African American students
enrolled at HSC since 2020

12%

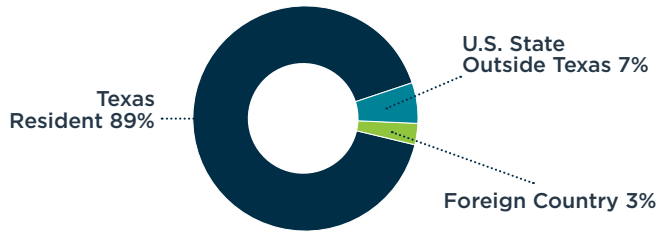


Increase in the number of
Hispanic/Latino students
enrolled at HSC since 2020

Enrollment according to fall 2021 IPEDS enrollment that includes the THECB CBM001 Fall 2021 Enrollment Report plus students enrolled in self-supporting graduate certificate programs, according to DOE NCES IPEDS definitions. • Race/Ethnicity is reported according to IPEDS definitions: Students who are not U.S. citizens or U.S. nationals and who are in the U.S. on a visa or temporary basis are reported with the legal status of "Nonresident Alien/International." Students who identify as Hispanic/Latino ethnicity, of any race, are reported as "Hispanic/Latino." Students who identify as Non-Hispanic/Latino ethnicity and who identify with more than one race category are reported as "Two or More Races." Students who identify as Non-Hispanic/Latino ethnicity and one race are reported in the selected race category. Students who do not provide a race or ethnicity are reported as "Not Specified." For purposes of the Viewbook, the following are reported as a combined total in the "Two or More & Other Races" category: non-Hispanic American Indian or Alaska Native, non-Hispanic Native Hawaiian or Other Pacific Islander, and non-Hispanic Two or More Races. • Students enrolled in multiple programs count only once in the HSC Total Enrollment. • Sums may be +/- 1% due to rounding.

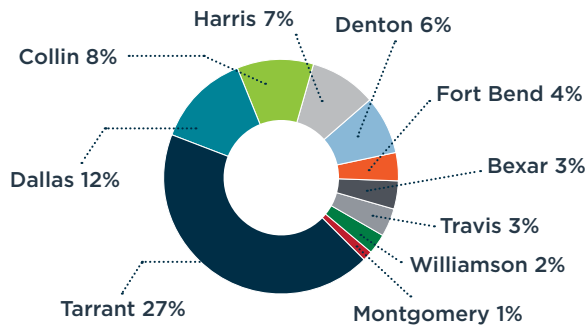
STUDENT RESIDENCY

TEXAS RESIDENCY

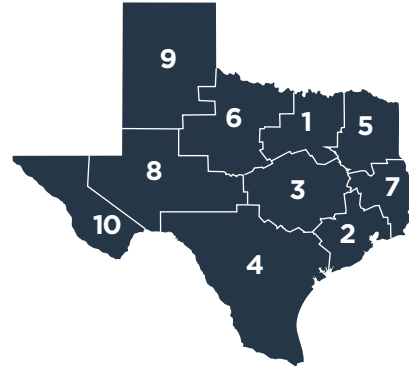


HSC attracted students from:
98 Texas Counties
40 U.S. States/Territories Outside Texas
18 Foreign Countries

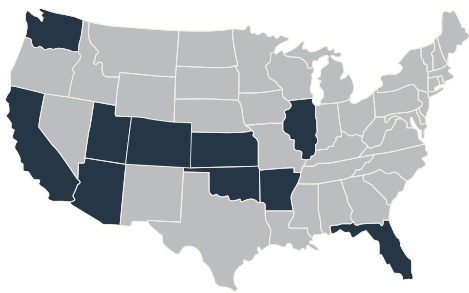
TOP 10 TEXAS COUNTIES



TEXAS REGIONAL DISTRIBUTION

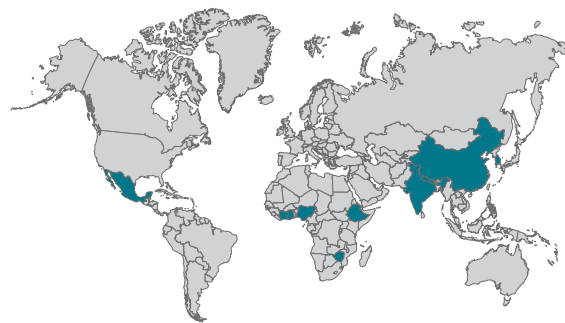


- » 1.....Metroplex 57%
- » 2.....Gulf Coast 13%
- » 3.....Central Texas 8%
- » 4.....South Texas 6%
- » 5.....Upper East 2%
- » 6.....Northwest 1%
- » 7.....Southeast 1%
- » 8.....West Texas 1%
- » 9.....High Plains 1%
- » 10.....Upper Rio Grande 1%



TOP 10 STATES OUTSIDE TEXAS

- California 1%
- Utah 1%
- Colorado 1%
- Florida 1%
- Oklahoma <1%
- Arizona <1%
- Arkansas <1%
- Illinois <1%
- Kansas <1%
- Washington <1%





TOP 10 COUNTRIES OUTSIDE USA

- India 1%
- Ghana 1%
- People's Republic of China <1%
- Nepal <1%
- Nigeria <1%
- Mexico <1%
- Zimbabwe <1%
- Republic of South Korea <1%
- Ethiopia <1%
- Cote d'Ivoire <1%

Geographic data from Fall 2021 IPEDS Enrollment Report (which includes the THECB CBM001). County and regional designations are according to THECB Appendices to the Reporting and Procedures Manuals for Health-Related Institutions and the Texas Higher Education Regional Portal. • Sums may be +/- 1% due to rounding.

COLLEGE/SCHOOL STUDENT PROFILES

	Texas College of Osteopathic Medicine	School of Biomedical Sciences	School of Public Health	School of Health Professions	College of Pharmacy
ENROLLMENT	952	509	271	383	392
Female	56% 	63% 	83% 	77% 	65% 
Male	44% 	37% 	17% 	23% 	35% 
Asian	37% 	27% 	11% 	9% 	32% 
Black/African American	2% 	13% 	17% 	8% 	22% 
Hispanic/Latino	12% 	15% 	19% 	22% 	17% 
International	0%	6% 	13% 	1% 	0%
Not Specified	3% 	2% 	1% 	2% 	2% 
Two or More & Other Races	3% 	4% 	3% 	3% 	3% 
White	43% 	34% 	37% 	56% 	24% 
Age Range	20-54	20-58	21-70	21-73	20-51
Median Age	25	24	26	25	26
Full Time	99% 	95% 	57% 	92% 	95% 
Part Time	1%	5% 	43% 	8% 	5% 
Texas Resident	94% 	83% 	78% 	87% 	98% 
U.S. State Outside Texas	6% 	10% 	8% 	13% 	2% 
Foreign Resident	0%	7% 	14% 	1% 	0%
New Students	25% 	43% 	31% 	32% 	25% 

Enrollment according to Fall 2021 IPEDS Enrollment that includes the THECB CBM001 Fall 2021 Enrollment Report plus students enrolled in self-supporting graduate certificate programs, according to DOE NCES IPEDS definitions. • Race/Ethnicity is reported according to IPEDS definitions: Students who are not U.S. citizens or U.S. nationals and who are in the U.S. on a visa or temporary basis are reported with the legal status of "Nonresident Alien/International." Students who identify as Hispanic/Latino ethnicity, of any race, are reported as "Hispanic/Latino." Students who identify as Non-Hispanic/Latino ethnicity and who identify with more than one race category are reported as "Two or More Races." Students who identify as Non-Hispanic/Latino ethnicity and one race are reported in the selected race category. Students who do not provide a race or ethnicity are reported as "Not Specified." For purposes of the Viewbook, the following are reported as a combined total in the "Two or More & Other Races" category: non-Hispanic American Indian or Alaska Native, non-Hispanic Native Hawaiian or Other Pacific Islander, and non-Hispanic Two or More Races. • The 35 students enrolled in multiple programs count in each applicable college/school profile. • Sums may be +/- 1% due to rounding.

STUDENT PROFILE COMPARISON 2021 TO 2020

	HSC Total			Texas College of Osteopathic Medicine			School of Biomedical Sciences			School of Public Health			School of Health Professions			College of Pharmacy		
	% Change	2021	2020	% Change	2021	2020	% Change	2021	2020	% Change	2021	2020	% Change	2021	2020	% Change	2021	2020
Enrollment	↑ 6%	2,472	2,329	↑ 1%	952	945	↑ 24%	509	412	↑ 16%	271	233	↑ 1%	383	380	→ 0%	392	392
Female	↑ 4%	65%	62%	↑ 2%	56%	55%	↑ 15%	63%	55%	↑ 9%	83%	76%	↓ -4%	77%	80%	↑ 3%	65%	63%
Male	↓ -7%	35%	38%	↓ -2%	44%	45%	↓ -19%	37%	45%	↓ -28%	17%	24%	↑ 16%	23%	20%	↓ -5%	35%	37%
Asian	↓ -6%	27%	29%	↓ -3%	37%	38%	↓ -8%	27%	29%	↓ -29%	11%	15%	↓ -11%	9%	10%	↓ -3%	32%	33%
Black/African American	↑ 33%	10%	7%	↑ 79%	2%	1%	↑ 102%	13%	6%	↑ 2%	17%	16%	↑ 92%	8%	4%	↑ 4%	22%	21%
Hispanic/Latino	↑ 6%	16%	15%	↑ 22%	12%	10%	↓ -21%	15%	19%	↑ 15%	19%	17%	↑ 19%	22%	19%	↓ -4%	17%	18%
International	↑ 9%	3%	2%	→ 0%	0%	0%	↓ -19%	6%	7%	↑ 3%	13%	13%	NA	1%	0%	→ 0%	0%	0%
Not Specified	↑ 11%	2%	2%	↑ 70%	3%	1%	↑ 35%	2%	1%	NA	1%	0%	↓ -43%	2%	4%	↓ -20%	2%	3%
Two or More & Other Races	↓ -6%	3%	3%	↓ -4%	3%	4%	↑ 34%	4%	3%	↓ -14%	3%	3%	↓ -30%	3%	4%	→ 0%	3%	3%
White	↓ -4%	39%	41%	↓ -6%	43%	46%	↓ -1%	34%	35%	↑ 3%	37%	36%	↓ -6%	56%	59%	↑ 5%	24%	23%
Age Range		20-73	19-69		20-54	20-46		20-58	20-57		21-70	21-69		21-73	22-55		20-51	19-50
Median Age	→ 0%	25	25	→ 0%	25	25	→ 0%	24	24	↑ 4%	26	25	→ 0%	25	25	↑ 4%	26	25
Full Time	↑ 3%	92%	90%	↓ -1%	99%	100%	↓ -3%	95%	98%	↑ 344%	57%	13%	↑ 0%	92%	92%	↓ -4%	95%	99%
Part Time	↓ -23%	8%	10%	NA	1%	0%	↑ 173%	5%	2%	↓ -51%	43%	87%	↓ -1%	8%	8%	↑ 533%	5%	1%
Texas Resident	↓ -2%	89%	91%	↓ 0%	94%	94%	↓ -4%	83%	87%	↑ 0%	78%	78%	↓ -3%	87%	89%	↓ -1%	98%	99%
U.S. State Outside Texas	↑ 22%	7%	6%	↑ 1%	6%	6%	↑ 72%	10%	6%	↓ -5%	8%	8%	↑ 19%	13%	11%	↑ 75%	2%	1%
Foreign Resident	↑ 18%	3%	3%	NA	0%	0%	↓ -9%	7%	8%	↑ 2%	14%	14%	NA	1%	0%	NA	0%	0%
New Students	↑ 9%	31%	28%	↑ 1%	25%	25%	↑ 99%	43%	22%	↓ -37%	31%	48%	↑ 1%	32%	32%	↓ -4%	25%	26%

"% Change" is the percentage change in 2021 values from the 2020 values: (2021% - 2020%)/2020%. Note that % change is calculated on actuals with extended decimal points and may differ from calculations using the displayed rounded numbers. • Enrollment according to IPEDS Fall Enrollment Reports, which includes the THECB CBM001 Reports. 2021 enrollment also includes students enrolled in self-supporting graduate certificate programs. The 2020 enrollment applied THECB criteria that excluded some certificate students. The normalized increase, accounting for the excluded certificate students, is 5.5%. • Race/Ethnicity is reported according to IPEDS definitions. For comparison to 2021, IPEDS definitions were applied to 2020 Viewbook data, resulting in the reclassification of 18 Black/African American students to the Two or More Races category, changing the proportion of the Black/African American category from 8% of total students to the revised 7% of total students. Students who are not U.S. citizens or U.S. nationals and who are in the U.S. on a visa or temporary basis are reported with the legal status of "Nonresident Alien/International." Students who identify as Hispanic/Latino ethnicity, of any race, are reported as "Hispanic/Latino." Students who identify as Non-Hispanic/Latino ethnicity and who identify with more than one race category are reported as "Two or More Races." Students who identify as Non-Hispanic/Latino ethnicity and one race are reported in the selected race category. Students who do not provide a race or ethnicity are reported as "Not Specified." For purposes of the Viewbook the following are reported as a combined total in the "Two or More & Other Races" category: non-Hispanic American Indian or Alaska Native, non-Hispanic Native Hawaiian or Other Pacific Islander and non-Hispanic Two or More Races. • Students enrolled in multiple programs count only once in the HSC Total Enrollment, but count in each applicable College/School Enrollment. • Sums may be +/- 1% due to rounding.

GRADUATION RATES



96%
of HSC doctoral-
professional practice
students complete their
degree within six years

DOCTORAL DEGREE GRADUATION RATES

Graduation Rate by Program	Texas College of Osteopathic Medicine - DO	School of Biomedical Sciences - PhD	School of Public Health - PhD	School of Health Professions - DPT	College of Pharmacy - PharmD
Graduation Rate Years	6	10	9	6	6
Overall Rate	96%	63%	67%	98%	96%
Female	96%	58%	71%	97%	95%
Male	96%	67%	57%	100%	98%
Asian	97%	50%	71%	100%	100%
Black/African American	100%	100%	75%	100%	94%
Hispanic/Latino	96%	NA	67%	100%	100%
International	100%	NA	NA	100%	NA
Not Specified	100%	NA	NA	100%	100%
Two or More & Other Races	100%	100%	NA	100%	100%
White	95%	63%	57%	96%	92%
Average Time to Complete	3 Years, 10 Months	4 Years, 11 Months	3 Years, 3 Months	2 Years, 10 Months	3 Years, 10 Months

Data source: HSC Office of the Registrar completions for defined program cohorts. • Race/Ethnicity is reported according to IPEDS definitions: Students who are not U.S. citizens or U.S. nationals and who are in the U.S. on a visa or temporary basis are reported with the legal status of "Nonresident Alien/International." Students who identify as Hispanic/Latino ethnicity, of any race, are reported as "Hispanic/Latino." Students who identify as Non-Hispanic/Latino ethnicity and who identify with more than one race category are reported as "Two or More Races." Students who identify as Non-Hispanic/Latino ethnicity and one race are reported in the selected race category. Students who do not provide a race or ethnicity are reported as "Not Specified." For purposes of the Viewbook, the following are reported as a combined total in the "Two or More & Other Races" category: non-Hispanic American Indian or Alaska Native, non-Hispanic Native Hawaiian or Other Pacific Islander, and non-Hispanic Two or More Races. • Sums may be +/- 1% due to rounding.

GRADUATION RATES

86%

of HSC master's students complete their degree within six years



MASTER'S DEGREE GRADUATION RATES WITHIN 6 YEARS

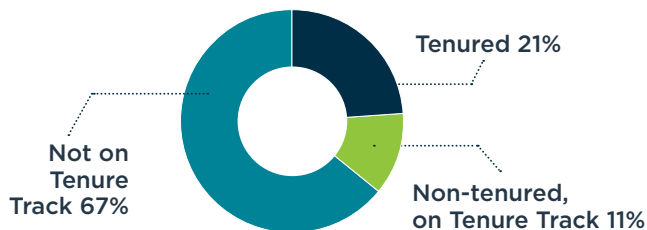
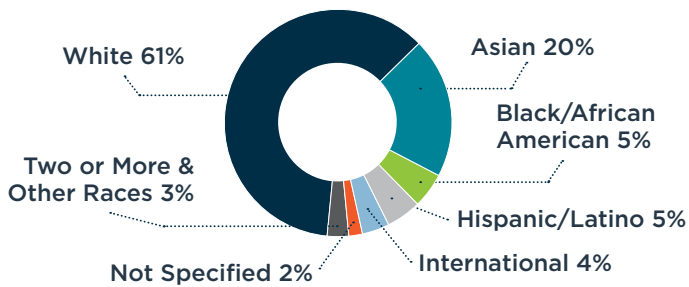
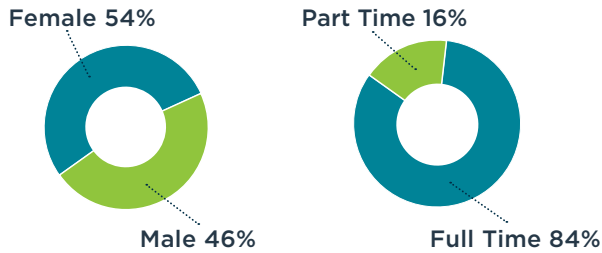
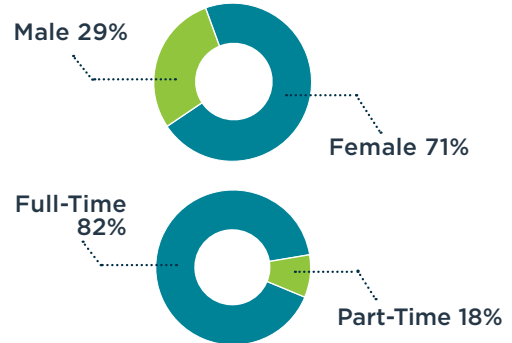
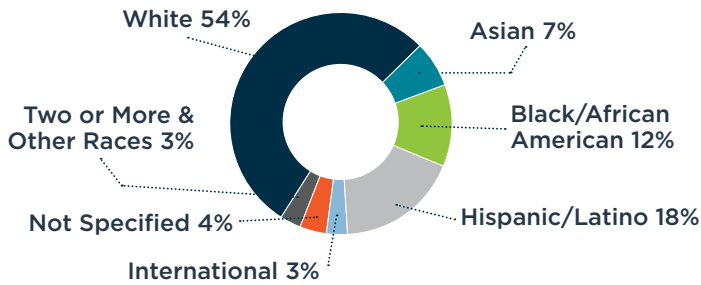
Graduation Rate by Program	School of Biomedical Sciences - MS	School of Public Health - MPH, MHA	School of Health Professions - MPAS	School of Health Professions - MSLS (Began in 2020)	College of Pharmacy - MS (Began in 2021)
Overall Rate	93%	74%	89%	100%	NA
Female	93%	73%	93%	100%	NA
Male	94%	76%	71%	100%	NA
Asian	92%	82%	80%	100%	NA
Black/African American	95%	71%	50%	100%	NA
Hispanic/Latino	95%	86%	85%	100%	NA
International	NA	NA	NA	NA	NA
Not Specified	NA	44%	100%	100%	NA
Two or More & Other Races	100%	0%	100%	100%	NA
White	93%	69%	92%	100%	NA
Average Time to Complete	1 Year, 1 Month	2 Years, 5 Months	2 Years, 9 Months	11 Months	NA

Data source: HSC Office of the Registrar completions for defined program cohorts. • Race/Ethnicity is reported according to IPEDS definitions: Students who are not U.S. citizens or U.S. nationals and who are in the U.S. on a visa or temporary basis are reported with the legal status of "Nonresident Alien/International." Students who identify as Hispanic/Latino ethnicity, of any race, are reported as "Hispanic/Latino." Students who identify as Non-Hispanic/Latino ethnicity and who identify with more than one race category are reported as "Two or More Races." Students who identify as Non-Hispanic/Latino ethnicity and one race are reported in the selected race category. Students who do not provide a race or ethnicity are reported as "Not Specified." For purposes of the Viewbook, the following are reported as a combined total in the "Two or More & Other Races" category: non-Hispanic American Indian or Alaska Native, non-Hispanic Native Hawaiian or Other Pacific Islander, and non-Hispanic Two or More Races. • Sums may be +/- 1% due to rounding.

HSC TEAM MEMBER PROFILE



1,152 Staff



285 Faculty

28 additional staff members also hold faculty status; however, they are included in the staff count because their primary roles are not instruction.

Data source: IPEDS 2020-2021 Human Resources Report from UNT System HR Data Analytics & Reporting, as of Nov. 1, 2020. Staff count includes 103 Graduate Assistants. • Race/Ethnicity is reported according to IPEDS definitions: Employees who are not U.S. citizens or U.S. nationals and who are in the U.S. on a visa or temporary basis are reported with the legal status of "Nonresident Alien/International." Employees who identify as Hispanic/Latino ethnicity, of any race, are reported as "Hispanic/Latino." Employees who identify as Non-Hispanic/Latino ethnicity and who identify with more than one race category are reported as "Two or More Races." Employees who identify as Non-Hispanic/Latino ethnicity and one race are reported in the selected race category. Employees who do not provide a race or ethnicity are reported as "Not Specified." For purposes of the Viewbook, the following are reported as a combined total in the "Two or More & Other Races" category: non-Hispanic American Indian or Alaska Native, non-Hispanic Native Hawaiian or Other Pacific Islander, and non-Hispanic Two or More Races. • Sums may be +/- 1% due to rounding.

FINANCIALS



UNIVERSITY FINANCIAL INFORMATION

\$115,574,658 Endowment

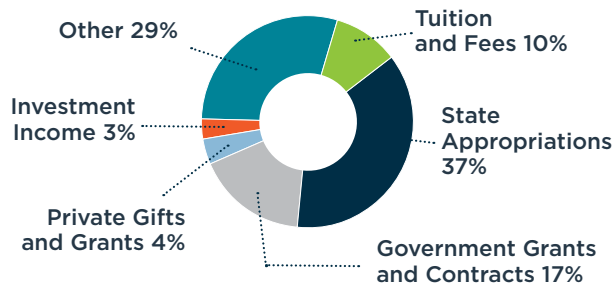
\$56,798,073

Government Grants and Contracts

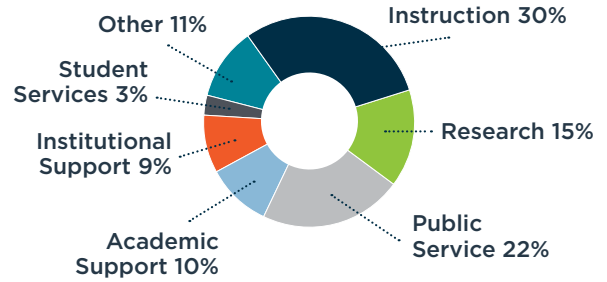
\$12,850,302

Private Gifts and Grants

REVENUE \$332,054,594



EXPENSES \$282,735,404



Data source: FY2021 HSC Annual Financial Report

HSC TUITION RATES 2021-2022

Program	Texas Resident	Non-Texas Resident
Texas College of Osteopathic Medicine - DO (Annual)	\$13,079	\$28,767
School of Health Professions - DPT (per SCH)	\$224	\$635
School of Health Professions - MPAS (per SCH)	\$178	\$647
School of Health Professions - MSLS (per SCH)	\$272	\$680
School of Biomedical Sciences - PhD (per SCH)	\$102	\$503
School of Biomedical Sciences - MS (per SCH)	\$148	\$624
School of Public Health - PhD (per SCH)	\$102	\$504
School of Public Health - MPH, MHA, MS (per SCH)	\$164	\$654
College of Pharmacy - PharmD (per SCH)	\$362	\$770
College of Pharmacy - MS (per SCH)	\$206	\$627

2018 3-Year Student Loan Default Rate: 0.7% • Average Default Rate for Other Texas Health-Related Public Institutions: 2.1%

Data sources: HSC Offices of Student Finance and Financial Aid, and the U.S. Department of Education Federal Student Aid Cohort Default Rates. • SCH=Semester Credit Hour. Stated tuition is the total of statutory, board authorized and board designated tuition. • Program-specific tuition and fee amounts are available at www.unthsc.edu/tuition-and-fees. • Cost of Attendance (COA) is available at www.unthsc.edu/financial-aid/cost-of-attendance-at-unthsc. • Financial aid information and assistance is available at www.unthsc.edu/financial-aid.

RESEARCH



BE VISIONARY

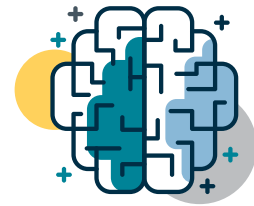


\$67.4 Million

Sponsored Research Awards

\$52.3 Million

Research Expenditures



- » Research areas of strength include health disparities, health outcomes, human identification, eye diseases, heart diseases, aging and degenerative brain disorders.
- » HSC is a global leader in neurodegenerative translational research, with a \$45 million grant to study health disparities in Alzheimer's disease. The Health and Aging Brain Study examines how biological and lifestyle factors contribute to cognitive problems in Mexican American and African American seniors.
- » HSC's Center for Health Disparities received a \$50 million award from the National Institutes of Health (NIH) to lead the coordinating center for the Artificial Intelligence/Machine Learning Consortium to Advance Health Equity and Researcher Diversity consortium, the AIM-AHEAD program. Other academic members of the consortium include Vanderbilt University, University of Houston, University of Colorado, UCLA, Meharry Medical College, Morehouse School of Medicine, Johns Hopkins University, Howard University and Harvard Medical School.
- » The School of Public Health received funding from the National Institute on Alcohol Abuse and Alcoholism to study attitudes about alcohol and marijuana use in young adults. This award adds to the school's extensive program of research on alcohol, tobacco and other drug use.

INNOVATION IN RESEARCH AT HSC



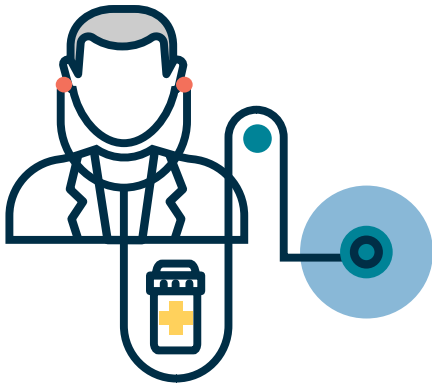
- » HSC Next launched a unique, innovative challenge program to fund creative approaches to solve problems in research, education and health care.
- » Pre-Clinical Imaging Center: The Division of Research and Innovation and School of Biomedical Sciences opened a new imaging center for pre-clinical research that features systems capable of MRI, CT, PET and SPECT imaging to complement the Clinical Imaging Center in the Institute for Translational Research.

Source: HSC Division of Research and Innovation.

PATIENT CARE



SERVE OTHERS FIRST



64%

of TCOM graduates enter primary care

The Texas College of Osteopathic Medicine is named as one of the nation's top medical schools for primary care by U.S. News & World Report, consistently ranking in the top 20 of all medical schools for its percent of graduates entering primary care.



93%

Opt-in rate for Medicare annual wellness visits by HSC Health eligible patients

Annual wellness visits identify potential health issues to delay, mitigate or prevent health issues altogether. By creating comprehensive care plans, HSC Health closes gaps in care, identifies conditions that may not otherwise be captured, and empowers patients to make informed choices about their health.



92,245

HSC Health Clinical Patient Encounters (in-person and virtual visits)

- » Specializing in primary care and prevention, healthy aging and applied genetics.
- » Only site in Texas selected for a Department of Health and Human Services federal grant to improve health care for older adults.
- » Pediatric Mobile Clinic provides health care to children in underserved areas of Fort Worth at no cost to families.
- » SaferCare Texas is a collaborative institute focused on educating, training and identifying opportunities to improve patient safety by reducing medical errors.

Sources: THECB Legislative Budget Board Performance Measures AY2021; U.S. News & World Report 2022 Best Medical Schools; HSC Health Administration.

COMMUNITY SERVICE



COLLABORATION



79,520

Volunteer hours by students, faculty and staff

- » HSC was the first to establish a drive-through COVID-19 testing site for first responders at the onset of the pandemic. Additionally, HSC partnered with Tarrant County Public Health to provide contact tracing services and launched a vaccine registration initiative in underserved areas of Tarrant County.
- » HSC partnered with Remote Area Medical (RAM®) to deliver free, quality dental, vision and medical care to underserved and uninsured individuals.
- » SaferCare Texas' Asthma 411 program provides asthma-mitigating medications to 11 economically disadvantaged public school districts, helping keep children in class and saving the schools more than \$1 million.
- » The Pediatric Mobile Clinic provides services to 1,850+ patients annually. Partnering with HSC's North Texas Eye Research Institute, more than 3,500 pre-k and kindergarteners received vision screenings last year.
- » Since the inception of Fort Worth's Cowtown Marathon more than 40 years ago, HSC has been actively involved in supporting this event. Most recently, the interprofessional team of students studying to become doctors, physical therapists, physician assistants, pharmacists and medical scientists staffed the marathon's 24 stations throughout the race route, providing support to runners who needed medical attention.
- » The UNT Center for Human Identification (CHI) manages the Texas Missing Persons DNA Database and performs forensic genetic and anthropological examinations to support criminal casework and identifications of missing and unidentified people. CHI's contributions to the FBI's Combined DNA Index System have generated 4,101 investigative leads for law enforcement agencies to date. From 2011 to 2021, CHI also managed the U.S. Dept of Justice's National Missing and Unidentified Persons System, supporting the resolution of 5,132 cases in one year alone (7/1/2020-6/30/2021.)



\$1,859,095

Economic Impact of Volunteer Hours

Sources: HSC Office of Institutional Advancement Community Relations, Texas Legislative Appropriations Request for FY 2022 and 2023, Center for Human Identification FY2021 Annual Report.

CONTACTS

HSC Admissions
www.unthsc.edu/admissions
admissions@unthsc.edu
817-735-2003

Alumni Relations
alumni@unthsc.edu • **817-735-2278**

Community Relations
unthsc.edu/community-relations • **817-735-2254**

HSC Health Clinic
unthsc.edu/patient-care • **817-735-3627**

HSC Student Health Clinic
unthsc.edu/students/student-health • **817-735-5051**

Human Resources
HSC.HR@untsystem.edu • **817-735-2690**

Marketing & Communications
Marketing@unthsc.edu

Media Contact
HSCMedia@unthsc.edu • **817-300-1931**

Registrar
Registrar@unthsc.edu • **817-735-2201**

Research & Innovation
Brian.Gladue@unthsc.edu • **817-735-5484**

Student & Academic Affairs
unthsc.edu/students/student-affairs
studaffr@unthsc.edu • **817-735-2505**

 **[/UNTHSC](#)**

 **[@unthsc](#)**

 **[/unthsc](#)**

 **[/unthsc](#)**



3500 Camp Bowie Blvd., Fort Worth, Texas 76107
unthsc.edu | 817 735-2000

Give to HSC:
unthsc.edu/give
giving@unthsc.edu • 817 735-5044

For information or comments regarding the HSC View Book, contact:
University Assessment and Accreditation
UAA@unthsc.edu • 817 735-2612